



SEVA
SCHOOL

S

SEVA NEWSLETTER

VAHEGURU JI KA KHALSA VAHEGURU JI KI FATEH

Wider Opening: Phase 1 Planning

Reintegration to Schools for Pupils in Reception and Years 1, 6 & 10

Further to recent government announcements on the potential wider opening of schools to include children in Reception, Year 1, 6 and 10 from June, we have worked closely with Coventry Local Authority to ensure that the well-being, health and safety of pupils and staff is held firmly at the centre of planning and preparation. The government has advised the following:

- Children in eligible year groups (Reception, 1 and 6) are strongly encouraged to attend
- Children of key workers and who are vulnerable should attend
- Children and staff classed as extremely vulnerable due to medical conditions should not attend
- Children and staff should not attend if they have symptoms or are self-isolating
- Parents will not be fined if they do not send their child to school.

Full guidance for you can be found here: <https://www.gov.uk/government/publications/closure-of-educational-settings-information-for-parents-and-carers/reopening-schools-and-other-educational-settings-from-1-june> As listed above, government guidance says we 'strongly encourage' pupils in eligible year groups to attend school. We miss all our pupils and of course would relish the opportunity to see them again in person on a daily basis. However, we also respect and understand that the decision to do so is a deeply personal one and one that will be based on the needs and confidence of families to want to do this. The information provided in this newsletter will we hope offer some reassurance. It is also important to remember that work on Ms Teams will continue for all year groups during this first phase due to start after half term.

We have been planning for the potential wider opening of our school and the key measures listed below are based on the guidance issued by the government, DfE, Public Health England and risk assessment in line with the core principles agreed in the Coventry Local Authority's strategy. They are as follows:

- **Supplementing purchases of antibacterial hand wash to meet increased hygiene standards.**
- **Operating a full daily cleaning schedule and weekly deep cleans.**
- **Marking out clear 2 metre social distancing lines as required on the site.**
- **Limiting class group sizes to 8 children per adult, per classroom initially and then to build to no more than 10 children per adult, per classroom as we move to Phase 2. (DfE set a max of 15 and the LA a max of 10).**
- **Ensuring the same member of the teaching staff team is allocated to the same group of children for the consecutive days that they are on site.**
- **Staggering start and finish times of the day as well as break times to prevent mixing outside of time spent in the classroom.**
- **Suspending coach services until further notice so as to adhere to strict public transport social distancing guidelines and recommended staggered arrival and departure times.**

NOTICES & INFORMATION

Provision for Vulnerable Pupils and Pupils of Key Workers Parents:

The current procedural systems set for provision for vulnerable children and for the children of critical workers remains the same in terms of organisation at school. The following information has been updated and sent by the LA explaining how matters have moved on to further encourage attendance at school for these groups: “ 23 March, in line with the scientific advice, nurseries, schools and colleges have remained open only to a priority group of children and young people, children who have a parent who is a critical worker and vulnerable children. Now that we have made progress in reducing the transmission of coronavirus **we are encouraging all eligible children to attend settings (where there are no shielding concerns for the child or their household), even if parents are able to keep their children at home.** Children of critical workers, and vulnerable children who are already eligible, will continue to be offered a place, regardless of the year group they are in. The definition of critical workers remains unchanged”. Please find a full list of critical workers and information related to this, available many languages including Panjabi, by following the URL: <https://www.gov.uk/government/publications/covid-19-stay-at-home-guidance>.

NOTICES & INFORMATION

Seva School Reception Children 2020

Information for Parents

Over the Easter period, all families should have learned which school they have been allocated. If you have not yet applied for a school place at Seva, please contact the Coventry City Council Admissions team for information and advice. You can find their contact details by clicking [here](#).

For further information about our wonderful school, I would like to direct you to our website and our new “Primary Information” and “Information for Parents of Reception Children 2020” sections under the ADMISSIONS tab. Here you will find information dedicated to the children and families who are joining us in our new Reception year in September 2020 and those wanting to make an application.

As you will be aware, the Coronavirus (Covid-19) situation has had a significant impact on how schools are operating. Therefore, although induction will look different to years gone by, rest assured it will be no less important. Details on how and when this will take place at Seva School, in the best interests of the health and safety of all involved, will be released in due course.

During these unprecedented times, Seva School has been working hard to keep together as a school community and everyone has played a vital role in making this work exceptionally well for all our pupils and their families. I am delighted to say that if your child has been allocated a place with us, they (and you) are now very much part of our community and it is a pleasure to welcome you to our excellent school.

If you require further information or have any questions please do not hesitate to [email carolyn.smith@seva.coventry.sch.uk](mailto:carolyn.smith@seva.coventry.sch.uk) or telephone 024 7798 7619 and leave a message. Mrs Smith (SIMS Manager) will work closely with Mrs. Dosanjh (Reception & Phonics Lead and Class Teacher) to respond to your queries in good time.

Kindest regards,

Mrs. S. Sanghera
Head of Primary

NOTICES & INFORMATION

Seva School recognised by UNICEF



Earlier in the year we set an aim for SEVA to be a school where children's rights are at the heart of our ethos and culture, to improve well-being and to develop every child's talents and abilities to their full potential. As part of this plan we have successfully received recognition as a 'Rights Respecting School', an award given to schools on behalf of UNICEF UK.

UNICEF is the world's leading organisation working for children and young people and their rights. In 1989, governments across the world agreed that all children have the same rights by adopting the UN Convention on the Rights of the Child (UNCRC). These rights are based on what a child needs to survive, grow, participate and fulfil their potential.

SEVA pupils have been learning about their rights and supported in putting them into practice every day through PHSE, assemblies and linking within specific subject lessons. A Rights Respecting School models rights and respect in all its relationships.

It doesn't stop here, we really hope that you will be able to support our school on our continued journey towards becoming a GOLD UNICEF UK Rights Respecting School. For further information about Rights Respecting Schools please visit: www.unicef.org.uk/rrsa



Seva School is an accredited Stonewall Champions School

The Stonewall School & College Champion awards allow School & College Champions based in England to effectively benchmark our progress and give direction to our ongoing work in tackling homophobic, biphobic and transphobic bullying and celebrating diversity. Linking with Sikh, British values and UNICEF we ensure every child's rights are respected.

NOTICES & INFORMATION

School Arrival and Departure Arrangements

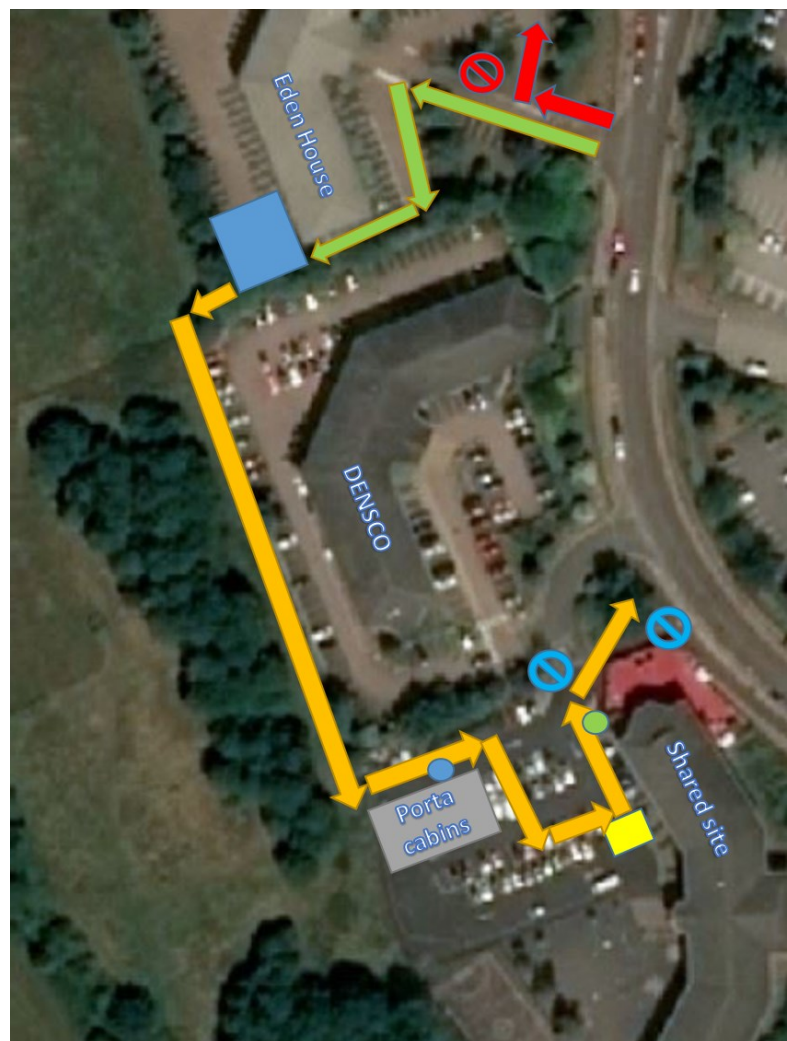
In line with the latest Government guidance we have made changes to the way in which students arrive and depart from school each day.

Anyone arriving by car will be expected to park at Eden House, and then walk through the walkway towards the main school building. The walkway will operate a one way system to keep everyone safe. Once you are on the school site the path everyone should follow is clearly marked and should be followed. The pathway is also a one way system and parents must follow it to the end, even after dropping their children off and then walk back to Eden House to collect their cars.

It is important to note that entry to the school site is strictly limited and entry onto the school site from any other point apart from the one way walkway will result in you being asked to use the correct pathway by a member of the senior team.

Year 6 and 10 will enter the school site via the silver gate and Reception and year 1 will enter the building by the green gate as normal where they will be greeted by their teacher for the day. It is vital that everyone stays 2m apart in line with Government guidelines.

Please see the map below which shows the arrangements described above.



NOTICES & INFORMATION

Princes Trust Courses

The Princes Trust are offering a range of courses over the summer to support students in a number of areas including CV writing, Interview techniques and developing a range of skills that employers look for in their employees. For further information please see the link below:

www.princes-trust.org.uk

Drama

Over the past few weeks some of our students have been producing some high quality work in Drama. Some of the stand out students include, Gurjeevan Bahra and Navpreet Kaur.

Well done!

Textiles



Another example of the fantastic work our students have created—a mask by Jorsh in year 8.

NOTICES & INFORMATION

Reading Terror Attacks

Following on from the horrific events in Reading please see the link below regarding offering community support for those affected by the events:

<http://sevakeducationtrust.org/prevent-victims-of-terrorism-unit-website/>

NOTICES & INFORMATION

SEVA SCHOOL ADMISSIONS

We have places in our Reception, Primary and Secondary. We are in a unique position as we can offer places that go from Reception and Primary straight through to Year 11 as an all-through school. Due to Covid-19 restrictions we cannot offer tours on site at the moment, but you are welcome to visit our school's website for information and insight. If you would like to register your interest in your child joining our school and receive an electronic version of our brochure then please email: carolyn.smith@seva.coventry.sch.uk directly with your name, child's name, child's DoB and when you would like them to join. Information regarding the processes you will need to follow will be shared with you dependent on the year group your child will be joining. Thank you and we look forward to hearing from you.

CONTACT DETAILS

Each September the school sends out a **Contact Data Sheet** for all children enrolled at the school. These are for parents to update and return to the school. The contact details must be renewed annually, but you can request an update at any time in the year depending on any changes. Essential details that are included are as follows: address, emails, home telephone and mobile nos. Can you please inform the school if you have any changes since completing the data sheet in September 2019 as soon as possible.

You can email carolyn.smith@seva.coventry.sch.uk or write the changes on paper and post the information to the school. Please address it to: Seva School Office, FAO Mrs. C. Smith, Eden Road, Coventry, CV2 2TB. Thank you.

MEDICAL REMINDER

As you aware, if your child has a medical condition, a **Medical Healthcare Form** must be completed and sent into school so that we can record it on our school system. If the child needs medication in school it should be clearly labelled with the child's name, class/form, and class teacher or form tutor. In the event that antibiotics are prescribed for a child, that must be taken during school hours, a separate form must be filled in - this can be collected from the front office or requested via school.office@seva.coventry.sch.uk All medication must again be clearly labelled with the child's name, class/form, and class teacher or form tutor. If your child has an epi pen or inhaler, it is your responsibility to provide the school with an in date inhaler and epi pen as a matter of priority. The information provided is important for parents to adhere to both during partial closure due to Covid-19, and when pupils, beyond those of key workers, return to school in the future. In the unfortunate event that your child develops a medical condition that you need to inform the school about during lockdown please email: medical@seva.coventry.sch.uk and a member of our first aid team will contact you with a **Medical Healthcare Form to complete**. Thank you.